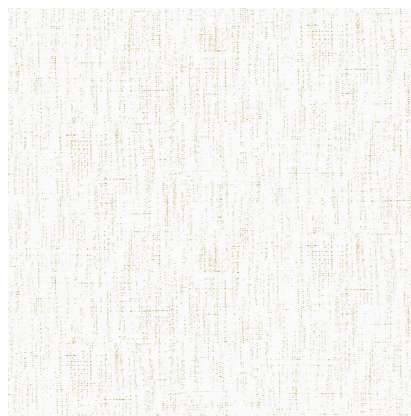


Model: SKINS EMPYREAL DOTS YELLOW

Codes: 100332362

Group: G-203

Format: 70X1000X0,1CM



## CERTIFICATIONS

|                |                              |
|----------------|------------------------------|
| Certifications | type II (ASTM F793/F793M-15) |
| Certifications | FSC                          |

## FEATURES



Independent (non-governmental) certificate that guarantees consumers that forest products come from rationally exploited forests



Roll format



The adhesive must be applied on the support to be decorated (gluing the wall)



The rolls should be installed so that the pattern at end of the roll matches the pattern at the beginning of the next roll, creating a mirror effect



Allows for dry removal



The duration of the warranty is that provided by the European Standard Warranty.



Excellent color fastness to light.



It can be cleaned with a sponge or soft brush.

## ADDITIONAL NOTES

We recommend purchasing all the wallpaper you will need in the same order and production shade, since there will be slight changes in shade between the different dyes/lots.

## DIMENSIONAL FEATURES

|        |         |
|--------|---------|
| Width  | 70 CM   |
| Length | 1000 CM |

## LABORATORY TESTS

|  |            |                            |
|--|------------|----------------------------|
| Flammability   | B-s1,d0    | EN 13501*                  |
| Flammability   | CLASS A    | ASTM E84*                  |
| Formaldehyde emissions                                   | <120 mg/kg | UNE-EN 15102:2007+A1:2011* |
| Migration of heavy metals and specific elements          | PASS       | UNE EN 15102:2019*         |
| Vinyl chloride monomer release                           | PASS       | UNE-EN 15102:2007+A1:2011* |
| Content of specific hazardous substances                 | PASS       | UNE-EN 15102:2019*         |
| Perfluorooctane sulfonic acid (pfos) and its by-products | PASS       | UNE-EN 15102:2019*         |
| Weight   | 420 G/M2   | EN ISO 536*                |
| Dry tensile md   | PASS       | ASTM F793/F793M-15*        |
| Dry tensile cd   | PASS       | ASTM F793/F793M-15*        |
| Elongation md  | PASS       | ASTM F793/F793M-15*        |
| Elongation cd  | PASS       | ASTM F793/F793M-15*        |



## PACKING

|                        |                |  |
|------------------------|----------------|--|
| Sales units per box    | 42 M2/BOX      |  |
| Sales units per pallet | 504 M2/PAL     |  |
| Sales units per unit   | 7 M2/PIECE     |  |
| Net weight             | 0.421429 KG/M2 |  |
| Sale unit              | M2             |  |
| Base unit              | ST             |  |
| Gross weight           | 0.457143 KG/M2 |  |

